

Art GCSE - Year 9 into 10 introduction

Welcome to GCSE Art, we are really looking forward to starting the course with you.

As part of your course you will be required to complete at least 1 hour of homework a week (KO attached). To complete this you will need to purchase some art materials. A shopping list is provided for you so you can get the correct equipment. Art paper will be supplied to you.

Your first unit of coursework in Year 10 is 'Natural - Mechanical'.

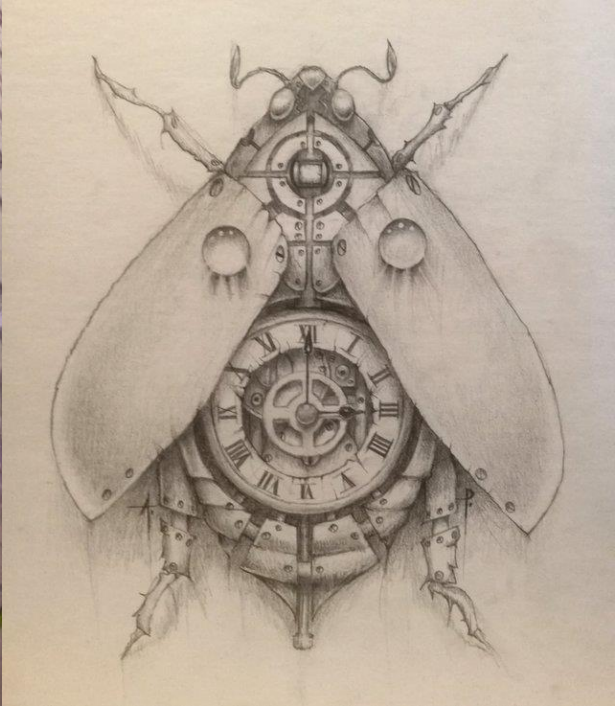
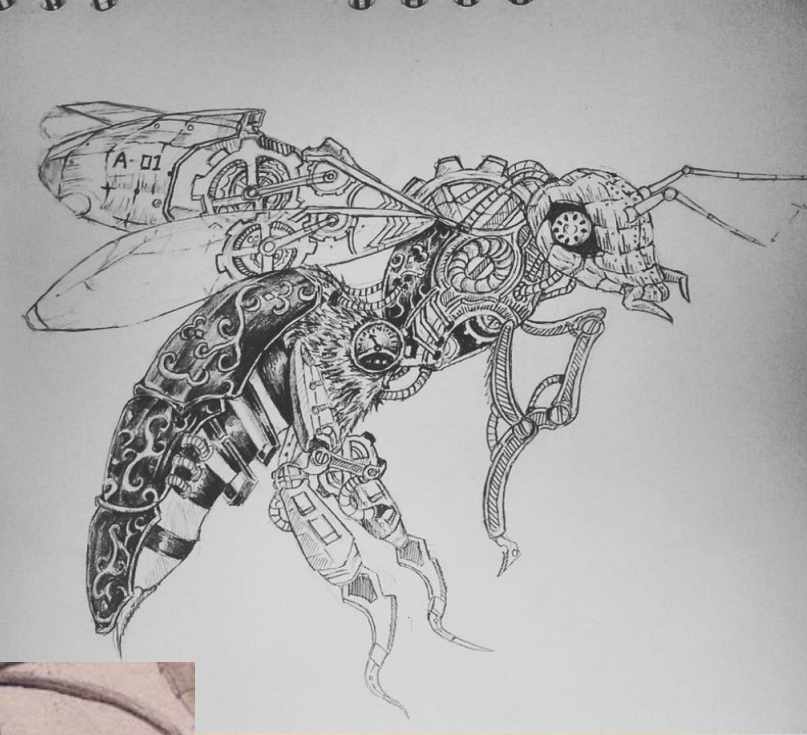
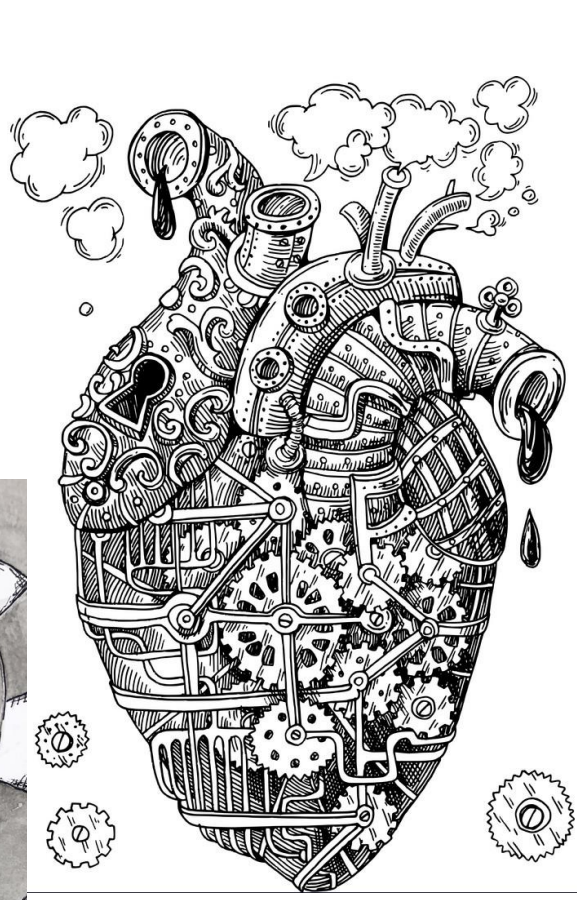
For your Summer Project you are required to make a front page for your sketchbook on this theme.

Work on A4 paper - you can collect this from the art teachers.

Use any materials that you like, we look forward to seeing your skilful and creative work.

This is due in on your first lesson in September.

There some images on the next slide to inspire you, please don't copy these, use your own ideas and make a personal response.



Shopping list

The list is made referencing The Works as their materials are good quality and a reasonable price. You can buy them from elsewhere if you wish.

Acrylic Paint set - £5 (includes, paints, brushes, palette, pencil, rubber and sharpener)

<https://www.theworks.co.uk/p/acrylic-paint/crawford-and-black-acrylic-paint-set---20-pieces/5052089170926.html>

Watercolour pencils - £4

<https://www.theworks.co.uk/p/coloured-pencils/crawford-and-black-artist-watercolour-pencils---set-of-15/5052089215696.html>

Fine line pen - £1 (set of 3)

<https://www.theworks.co.uk/p/office-stationery-supplies/black-fine-line-pen-set---pack-of-3/5052089127142.html>

Knowledge Organiser: Year 10 Art –Natural and Mechanical Forms

Week 1

Draw a corkscrew from observation. Make close up viewpoint.

For an example of the drawing technique
<https://www.youtube.com/watch?v=QTOZwfQq7KU>



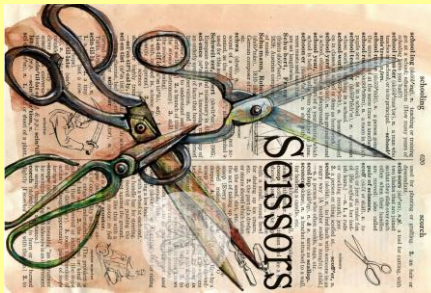
Week 2

Make an acrylic painting of a section of your drawing from last week.



Week 3

Stain your paper with a tea bag and dry it.
Now draw a pair of scissors.
Use pencil and fine line pen.
Add white paint for highlights



Week 4

Draw a close up section of cogs.
Use pencil and fine line pen.



Complete one task a week.
Each task will take between 1 and 2 hours.

Each artwork should be at least A5 in size (half a sheet of A4 paper)

An additional booklet of images has been provided to support you.

All work completed counts towards coursework (60% of your final GCSE)

Week 5

Using last weeks homework as a reference point, make an Abstract cog painting.



Week 6

Make close up drawing of a Leaf in pencil.
Use a wide range of tones.



Week 7

Make a drawing of a leaf.
Use colour pencil.



Week 8

Make a detailed drawing in pencil and fine line pen of a cheese grater section.



Week 9

Enlarge and simplify a section of last weeks drawing.
Apply abstract colour using Acrylic paint.



Week 10

Make a colour pencil drawing of a butterfly.



Week 11

Make a painting on a close up of a butterfly wing.

